

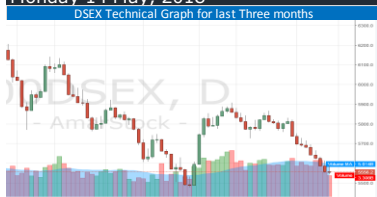
Daily Market Review



Monday 14 May, 2018

Gainers 134 ▲ Losers 135 ▼ Unchanged 70 ▬

www.slfbid.com



DSE Market summary	Today	Yday	Changes
DSEX	5557	5558	-1
DSES	1300	1301	-1
DSE30	2075	2075	0
Market Cap (BDT bn)	3934	3940	-6.00
Turnover (BDT mm)	3308	3787	-479.00
Volume (mm)	93	108	-15.00

Market Technical Information			
Market P/E	16.07	Market RSI (14)	31.06
Support Level 1	5543	Resistance Level 1	5910
Support Level 2	5291	Resistance Level 2	6140

Stocks	Lowest RSI (14)	Stocks	Highest RSI (14)
ADVENT	4.55	ITC	75.7
TALUSPIN	17.89	MERCINS	75.16
TRUSTBANK	20.44	WMSHIPYARD	74.03
EMERALDOIL	21.33	SEMUBBLSF	72.84
UTTARAFIN	21.51	MONNOSTAF	70.74
SHYAMPUSUG	22.33	RAHIMTEXT	68.21
ACI	22.84	UPGDCL	67.77
BIFC	23.6	RDFOOD	67.26
FIRSTFIN	24.22	PENINSULA	64.08
0	0	0	0

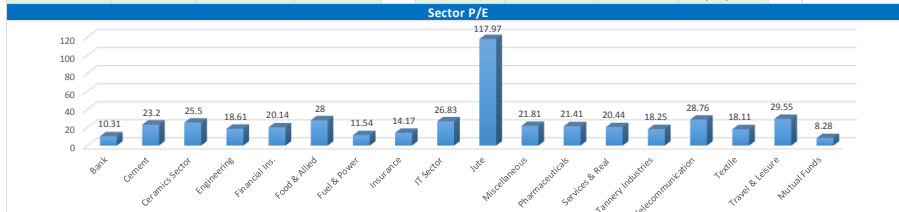
Index Mover			
Stock	Positive Ind Chg	Stock	Negative Ind Chg
SIBL	1.61	BATBC	-5.93
GP	1.14	UPGDCL	-3.78
IDLC	1.06	ISLAMIBANK	-1.89
EBL	0.61	ICB	-0.86
RUPALIBANK	0.46	MJLD	-0.86
NCCBANK	0.45	GHISPAT	-0.71
RENATA	0.45	SUMITPOWER	-0.71
SQUARETEXT	0.37	ONEBANKLTD	-0.7
PREMIERCEM	0.33	BSRMLTD	-0.69
SINGERBD	0.32	EKIMBANK	-0.69

Top Value			
Top Value	LTP	Change	Value(mm)
WMSHIPYARD	32.8	-1.30	237.71
UPGDCL	207.0	-5.50	167.92
DSSL	21.1	0.20	120.79
BEXIMCO	29.0	-0.30	97.20
BRACBANK	80.0	-0.20	95.93
BSRMLTD	108.0	-1.90	84.85
USMANIAGL	133.0	2.90	60.09
BSCABLES	79.3	-1.00	59.51
GP	466.0	0.50	53.75
MIRACLEIND	42.6	-1.90	53.25

Sector wise turnover and contribution(%)				
Sector	TDY TO(mm)	LDY TO(mm)	TDY Changes%	TDY Contribn.%
Bank	375.13	392.25	-4.365%	13.06
Jute	27.23	14.87	83.120%	0.95
Services & Real	17.59	24.43	-27.998%	0.61
Pharmaceuticals	231.89	275.86	-15.939%	8.07
Food & Allied	121.26	145.80	-16.831%	4.22
Mutual Funds	48.73	52.69	-7.516%	1.70
Fuel & Power	318.16	390.93	-18.615%	11.08
IT Sector	86.17	103.25	-16.542%	3.00
Insurance	99.10	104.32	-5.004%	3.45
Miscellaneous	270.50	370.70	-27.030%	9.42
Engineering	415.07	785.66	-47.169%	14.45
Cement	40.79	52.36	-22.097%	1.42
Tannery Industries	51.21	103.77	-50.650%	1.78
Financial Ins.	107.96	104.67	3.143%	3.76
Ceramics Sector	34.98	30.35	15.255%	1.22
Travel & Leisure	67.76	100.82	-32.791%	2.36
Telecommunication	55.76	42.99	29.705%	1.94
Paper & Printing	0.65	0.57	0.65	0.02
Textile	502.07	485.30	3.456%	17.48
Total Value in Taka	2872.01	3581.59	-19.812%	100.0

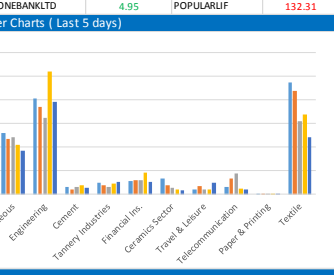
Block Market Information				
Stocks	Price	Trades	Quantity	Value(In Mn)
AIL	100	4	500000	49.96
MPETROLEUM	185	1	200000	37
ACIFORMULA	180	1	200000	36
MARICO	1200	1	5000	6
ABLISTIMF	8.6	1	300000	2.58

IPO Information				
IPO	Sub.Open	Sub.Close	Lot Price	
SK TRIMS & INDUSTRIES LTD.	14 May, 2018	22 May, 2018	5000	



10 Stocks by Market Demand			
Lowest PE (Unaudited) Ratio		Highest PE (Unaudited) Ratio	
Stocks	P/E	Stocks	P/E
EMERALDOIL	3.9	ECABLES	292.94
NBL	3.91	RENWICKIA	222.91
MERCANBANK	4.42	KAYQUE	177.93
LANKABAFIN	4.62	AZIZPIPES	171.64
POPULARIMF	4.62	SONLIANSH	166.26
IFIC	4.66	MODERNINDE	164.39
FBIF	4.75	STANCERAM	159.72
ABBLSTMF	4.84	GEMINISEA	140.48
TUNGHAI	4.94	APEXFOODS	134.24
ONEBANKLTD	4.95	POPULARLIF	132.31

Company's AGM, EGM and Record Date			
Name of the Company	Dividend in (%)	Date of AGM/EGM	Record Date
Premier Leasing and Finance Limited	5% & 5%#	14.05.2018	25.04.2018
Bank Asia Limited	12.50%#	14.05.2018	26.04.2018
Singer Bangladesh Limited	100%#	15.05.2018	26.04.2018
Bay Leasing and Investment Limited	10% & 5%#	19.05.2018	09.04.2018
Al-Arafah Islami Bank Limited	15% & 5%#	24.05.2018	30.04.2018
Shurwid Industries Limited	Nil	24.05.2018	03.05.2018
Uttara Finance and investments Limited	30%#	24.05.2018	30.11.2017
Uttara Bank Limited	20%#	24.05.2018	26.04.2018
Prime Bank Limited	7% & 10%#	24.05.2018	03.05.2018
Republic Insurance Limited	12.50%#	27.05.2018	06.05.2018
One Bank Limited	15% & 5%#	31.05.2018	10.05.2018
Mutual Trust Bank Limited	12.50%#	31.05.2018	10.05.2018
ICB Islamic Bank Limited	Nil	05.06.2018	10.05.2018



IMPORTANT DSE NEWS	
PEOPLESINS	The Board of Directors has recommended 10% cash dividend for the year ended on December 31, 2017. Date of AGM: 01.08.2018, Time: 11:30 AM, Venue: Spectra Convention Centre Limited, House # 19, Road # 7, Gulshan-1, Dhaka-1212. Record Date: 19.06.2018. The Company has also reported EPS of Tk. 2.20, NAV per share of Tk. 25.31 and NOCFPS of Tk. 2.93 for the year ended on December 31, 2017 as against Tk. 2.46, Tk. 24.31 and Tk. 4.37 respectively for the same period of the previous year.
PEOPLESINS	(Q1 Un-audited): EPS was Tk. 0.60 for January-March 2018 as against Tk. 0.58 for January-March 2017. NOCFPS was Tk. 0.92 for January-March 2018 as against Tk. 0.75 for January-March 2017. NAV per share was Tk. 25.91 as on March 31, 2018 and Tk. 24.89 as on March 31, 2017.
UNITEDINS	(Q1 Un-audited): EPS was Tk. 0.45 for January-March 2018 as against Tk. 0.72 for January-March 2017. NOCFPS was Tk. (0.13) for January-March 2018 as against Tk. (0.22) for January-March 2017. NAV per share was Tk. 30.42 as on March 31, 2018 and Tk. 29.97 as on December 31, 2017.
SOUTHEASTB	(Q1 Un-audited): Consolidated EPS was Tk. 0.68 for January-March 2018 as against Tk. 0.96 for January-March 2017. Consolidated NOCFPS was Tk. 5.44 for January-March 2018 as against Tk. 1.19 for January-March 2017. Consolidated NAV per share was Tk. 28.80 as on March 31, 2018 and Tk. 30.20 as on March 31, 2017.
SIBL	(Q1 Un-audited): Consolidated EPS was Tk. 0.36 for January-March 2018 as against Tk. 0.10 for January-March 2017. Consolidated NOCFPS was Tk. (9.52) for January-March 2018 as against Tk. (3.36) for January-March 2017. Consolidated NAV per share was Tk. 19.57 as on March 31, 2018 and Tk. 19.33 as on March 31, 2017.
AGRANINS	(Q1 Un-audited): EPS was Tk. 0.46 for January-March 2018 as against Tk. 0.44 for January-March 2017. NOCFPS was Tk. (0.18) for January-March 2018 as against Tk. 0.20 for January-March 2017. NAV per share was Tk. 18.19 as on March 31, 2018 and Tk. 17.72 as on December 31, 2017.
GLOBAUNS	(Q1 Un-audited): EPS was Tk. 0.41 for January-March 2018 as against Tk. 0.45 for January-March 2017. NOCFPS was Tk. 0.02 for January-March 2018 as against Tk. 0.14 for January-March 2017. NAV per share was Tk. 12.32 as on March 31, 2018 and Tk. 12.74 as on March 31, 2017.
UNIONCAP	(Q1 Un-audited): Consolidated EPS was Tk. 0.19 for January-March 2018 as against Tk. 0.46 for January-March 2017. Consolidated NOCFPS was Tk. (9.32) for January-March 2018 as against Tk. 1.72 for January-March 2017. Consolidated NAV per share was Tk. 14.80 as on March 31, 2018 and Tk. 14.61 as on December 31, 2017.
RELIANCINS	(Q1 Un-audited): EPS was Tk. 1.07 for January-March 2018 as against Tk. 0.94 for January-March 2017. NOCFPS was Tk. 1.66 for January-March 2018 as against Tk. 0.47 for January-March 2017. NAV per share was Tk. 53.36 as on March 31, 2018 and Tk. 64.63 as on March 31, 2017.
PRIMEBANK	(Q1 Un-audited): Consolidated EPS was Tk. 0.34 for January-March 2018 as against Tk. 0.78 for January-March 2017. Consolidated NOCFPS was Tk. 5.20 for January-March 2018 as against Tk. (0.31) for January-March 2017. Consolidated NAV per share was Tk. 24.44 as on March 31, 2018 and Tk. 25.35 as on March 31, 2017.