

# Daily Market Review

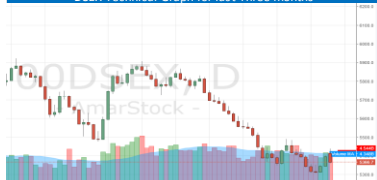


Thursday 07 June, 2018

Gainers 108 ▲ Losers 171 ▼ Unchanged 59 —

www.slfbid.com

DSEX Technical Graph for last Three months



DSE Market summary	Today	Yday	Changes
DSEX	5366	5398	-32
DSEI	1238	1245	-7
DSE30	1978	1993	-15
Market Cap (BDT bn)	3796	3816	-20.00
Turnover (BDT mm)	4544	4564	-20.00
Volume (mm)	94	95	-1.00

Market Technical Information			
Market P/E	16.07	Market RSI (14)	36.87
Support Level 1	5350	Resistance Level 1	5910
Support Level 2	5291	Resistance Level 2	6140

Stocks	Lowest RSI (14)	Stocks	Highest RSI (14)
GP	22.41	MONNOSTAF	90.33
IPOE	23.45	KPCL	89.51
FAMILYTEX	23.92	BDAUTOCA	83.9
ACEMELAB	25.7	ARGONDENIM	75.93
BIFC	26.03	STYLECRAFT	75.47
MBL1STMF	26.44	KAY&QUE	73.46
CITYGENINS	26.9	SEMUBBLSF	73.01
EXIM1STMF	26.91	LUBRAINFU	71.13
FIRSTFIN	27.27	EASTRNLUB	71.01
ADVENT	27.51	MONNOCERA	69.15

Index Mover

Stock	Positive Ind Chg	Stock	Negative Ind Chg
UPGDCL	3.91	GP	-24.61
BERGERPBL	2.34	SOURPHARMA	-1.41
MLBD	1.13	ICB	-1.31
RECKITBEN	0.84	BXPHARMA	-0.85
RENATA	0.84	EBL	-0.85
NCCBANK	0.80	BEXIMCO	-0.77
ENVOYTEX	0.48	IDLC	-0.77
OLYMPIC	0.48	IFADAUTOS	-0.76
TITASGAS	0.48	ISLAMIBANK	-0.76
MICEMENT	0.40	SUMITPOWER	-0.71

Top Value	LTP	Change	Volume
UPGDCL	227.6	6.30	196.20
AIL	97.0	-6.50	192.50
AMANFEED	55.3	0.50	186.60
LEGACYFOOT	94.5	8.30	144.54
BRACBANK	78.8	0.10	138.51
INTRACO	46.7	2.30	112.25
BEXIMCO	26.9	-0.60	111.35
GP	394.8	-10.20	102.36
SOURPHARMA	283.8	-1.10	86.71
AAMRANET	83.7	0.50	83.74

Top Volume	LTP	Change	Volume
AUF	12.2	0.2	4,257,024
BEXIMCO	26.9	-0.6	4,087,105
AMANFEED	55.3	0.5	3,286,574
DSSL	19.4	1.4	3,109,966
KEYACOSMET	9.6	-0.1	2,720,522
INTRACO	46.7	2.3	2,453,277
SEMILLECMF	9.8	0.5	1,956,061
AIL	97	-6.5	1,914,705
MERCANBANK	17.6	-0.4	1,798,541
BRACBANK	78.8	0.1	1,753,857

Sector wise turnover and contribution(%)

Sector	TDY TO(mm)	LDY TO(mm)	TDY Changes%	TDY Contribn.%
Bank	369.27	439.71	-16.020%	391.47
Jute	65.89	76.04	-13.248%	69.85
Services & Real	17.18	21.75	-21.011%	18.21
Pharmaceuticals	314.49	334.69	-6.035%	333.39
Food & Allied	118.56	130.69	-9.282%	125.69
Mutual Funds	36.75	26.12	40.697%	38.96
Fuel & Power	546.22	595.21	-8.231%	579.05
IT Sector	117.24	38.82	202.009%	124.29
Insurance	95.98	91.71	4.656%	101.75
Miscellaneous	514.65	498.07	3.329%	545.58
Engineering	629.87	605.19	4.078%	667.73
Cement	29.20	44.59	-34.514%	30.96
Tannery Industries	175.19	100.41	74.475%	185.72
Financial Ins.	152.34	101.20	50.534%	161.50
Ceramics Sector	91.12	2.91	3031.271%	96.60
Travel & Leisure	29.98	81.51	-63.219%	31.78
Telecommunication	103.73	106.98	-3.038%	109.97
Paper & Printing	0.64	0.49	0.64	0.68
Textile	766.20	686.15	11.667%	812.25
Total Value in Taka	4174.50	3982.24	4.828%	4425.4

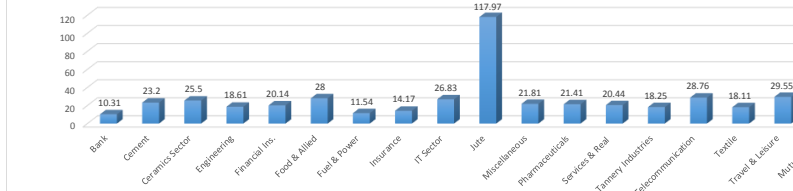
Block Market Information

Stocks	Price	Trades	Quantity	Value(In Mn)
SOURPHARMA	284	1	294000	83.49
GP	401	2	160634	64.38
IDLC	67	2	475156	31.83
UPGDCL	230	1	130000	29.9
STYLECRAFT	2070	4	435	8.95

IPO Information

IPO	Sub.Open	Sub.Close	Lot Price
Aman Cotton Fibrous Ltd.	03 Jun, 2018	10 Jun, 2018	3600 TK.

Sector P/E



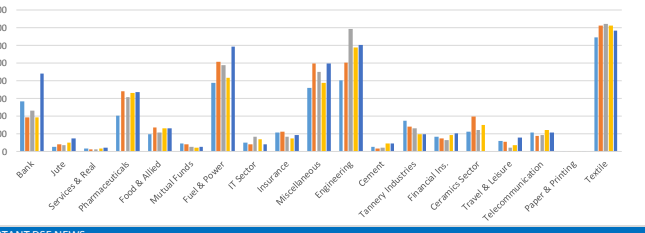
10 Stocks by Market Demand

Stocks	P/E	Stocks	P/E
KEYACOSMET	4.78	ECABLES	248.97
NORTHNRINS	10.06	RENWICKIA	245.37
MERCANBANK	4.5	KAY&QUE	212.28
BGIC	19.59	AZIZPIPES	194.88
SOUTHEASTB	5.98	MODERNDYE	188.8
CONTININS	10.69	LEGACYFOOT	184.34
FIRSTSBANK	5.38	SONALIANSH	170.8
UTTARAFIN	8.03	STANCERAM	160.56
PREMIERBAN	4.06	BDAUTOCA	156.6
PROVATIINS	8.23	AMBEEPHA	148.07

Company's AGM, EGM and Record Date

Name of the Company	Dividend in (%)	Date of AGM/EGM	Record Date
Lafarge Holcim Bangladesh Limited	5% Final	07.06.2018	15.05.2018
0	5% Interim i.e. 10% C in total	0	08.04.2018
Bangladesh Finance and Investment Limi	10%B	07.06.2018	
Heidelberg Cement Bangladesh Limited	150%C	07.06.2018	17.05.2018
Paramount Insurance Co. Ltd.	10%B	09.06.2018	20.05.2018
City General Insurance Limited	10%B	10.06.2018	22.05.2018
National Bank Limited	12%B	11.06.2018	26.04.2018
Asia Insurance Limited	10%C	11.06.2018	24.05.2018
Fas Finance and Investment Limited	10%B	20.06.2018	17.05.2018
Northern General Insurance Co. Ltd.	10%C	21.06.2018	19.04.2018
Bata Shoe Company (BD) Ltd.	105%C Final	21.06.2018	23.05.2018
0	230% Interim i.e. 335%C in total	0	23.05.2018
Delta Life Insurance Limited	N/A	21.06.2018 (EGM)	0

Sector wise turnover Charts ( Last 5 days)



## IMPORTANT DSE NEWS

BSRMLTD	The Company has informed that as per decision of the Board of Directors of the Company, a Subsidiary Company has been incorporated in Hong Kong in the name of "BSRM (Hong Kong) Limited". This Company will be engaged in trading of steels products, procurements and inspection of raw materials /spare parts etc. for BSRM Group.
EXCH	The Board of Directors of DSE has approved one day special holiday on June 14, 2018 in addition to Government holidays for Eid-ul-Fitr. Trading and official activities of Dhaka Stock Exchange Ltd. will resume to its previous time schedule (after Eid-ul-Fitr holidays) which is as follows: Trading hours: 10:30 AM to 2:30 PM and Office hours: 9:30 AM to 5:30 PM.
IFADAUTOS	The Company has informed that the Board of Directors has decided to purchase 444.25 decimal land situated at Gazipur, Sreepur at a cost of Tk. 2,94,20,000.00 including all registration fees.